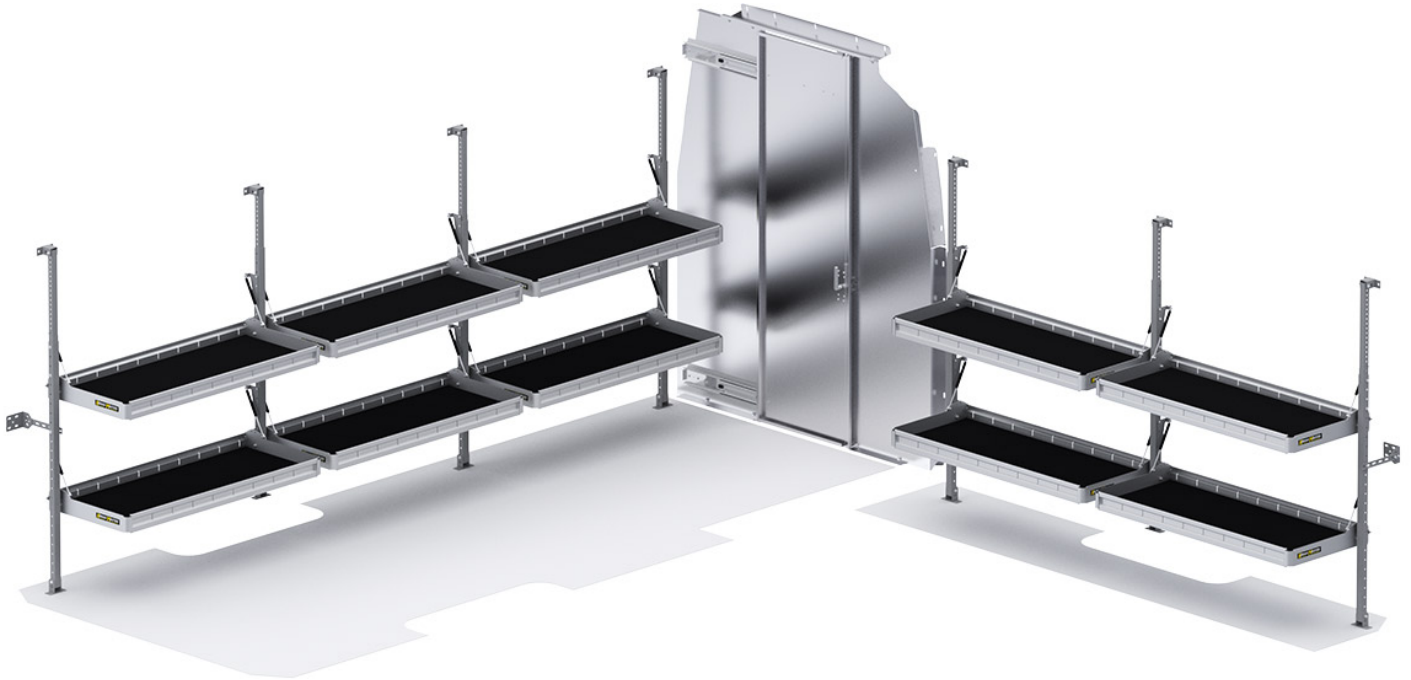


FOLDING SHELVES PACKAGE - SPRINTER 170" WB HIGH ROOF - SLIDING PARTITION

Part # : 51SLH





FLAT OUT AWESOME

Our folding shelves fold flatter than the competition's to maximize van interior space. Perfect for parcel delivery applications, they're lightweight, easy to install and each shelf is rated to 150 lbs. Made out of aluminum, with uprights of powder coat finished steel for extra rigidity.

- **Strong** - Each shelf is rated to carry 150 lbs. Uprights are powder coat finished steel for extra rigidity.
- **Light** - Shelving is made out of lightweight and strong aluminum with rigid HolyPan base.
- **Compact** - Shelves are easily positioned up and down to maximize van interior space
- **Guaranteed** - Holman Warranty

PACKAGE INCLUDES

| ITEM | DESCRIPTION | QTY |
|-------------|---|------------|
| 48007 | Folding Shelf - Leg | 1 |
| 48486 | Folding Shelf Unit - 48" W x 20" D | 3 |
| 48487 | Folding Shelf - Extra Shelf - 48" W x 20" D | 4 |
| 40601SH | Partition - Aluminum Sliding Door - Sprinter High Roof (No Wing Kit Required) | 1 |