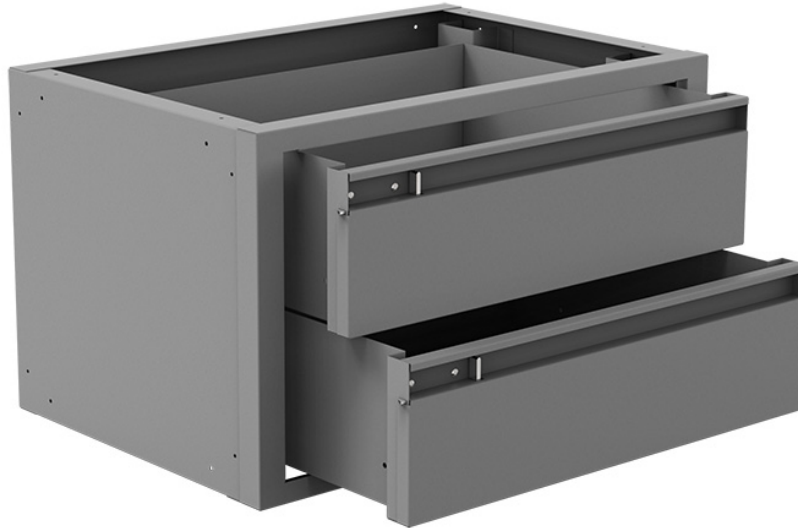


DRAWER CABINET - 2 DRAWERS

Part # : 40070



Steel 2 Drawer Cabinet

Fits on all steel Holman shelving units. Each drawer is coupled with smooth-sliding heavy-duty ball bearing rails that hold up to 40lbs. The individual latches keep drawers secured and provide easy access with just a quick slide of a finger. Large drawer inner dimensions are 16" W x 12.7" D x 5" H.

Features:

- 20 W x 12 H x 13.5 D
- Heavy-duty 40# ball bearing slides
- Individual drawer latches
- No assembly required
- Holman Warranty