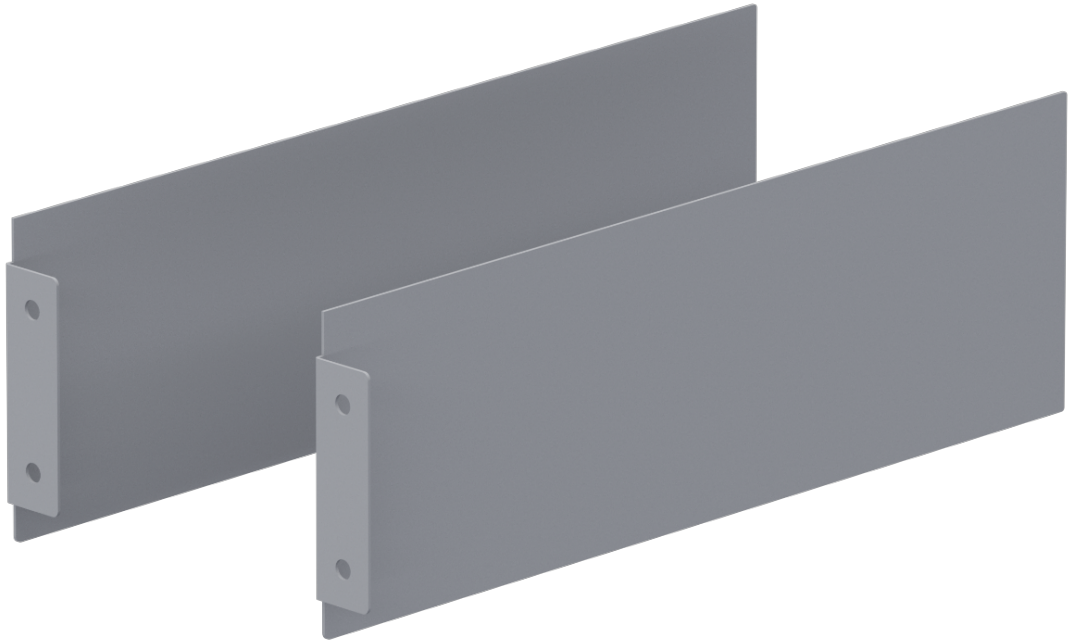


## **DRAWER - LOCKING SHELF DRAWER DIVIDERS (USE WITH 48132, 48142, 48152) - 2 PCS**

---

**Part # : 48102**



### **Drawer Locking Shelf Drawer Dividers (Use with 48132, 48142, 48152)**

Two extra dividers for use in 48132, 48142, or 48152.

#### **Features and Benefits:**

- Powder coated gray steel offers maximum strength and durability.
- Fits all locking shelf drawers, 48132, 48142, and 48152